

ALLIGHTSYKES

SYKES CP100i

Technical Pack

Rev1 Dec2017



JOHN DEERE



JAMES RIVER
EQUIPMENT



LIGHT

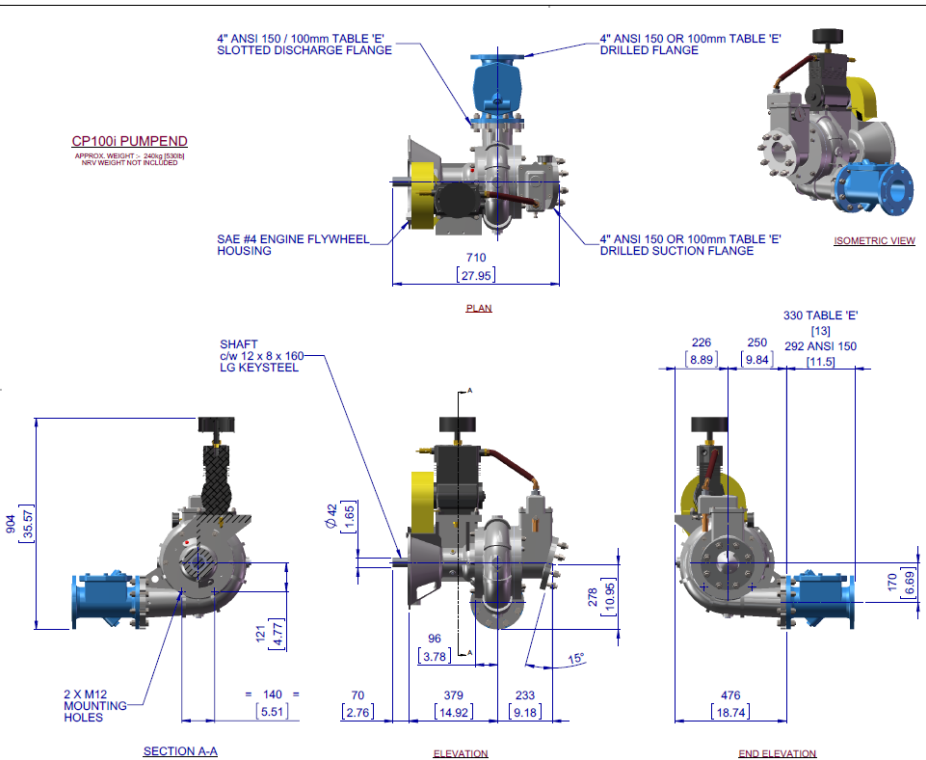
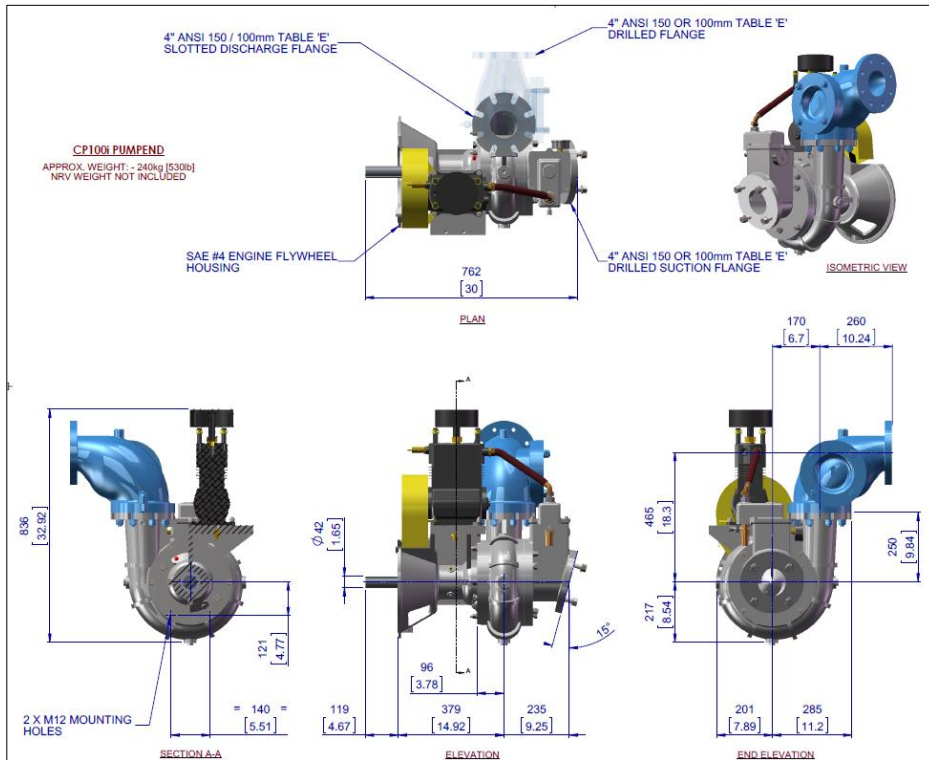


WATER



POWER

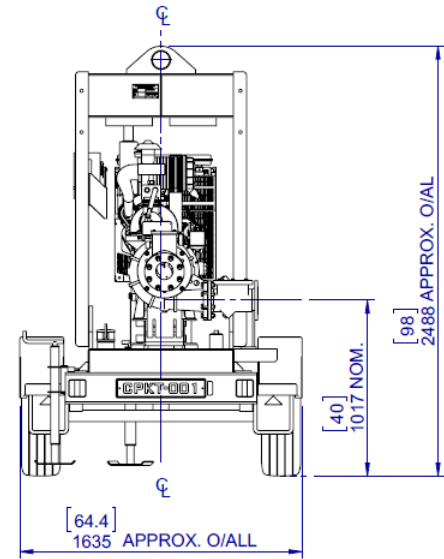
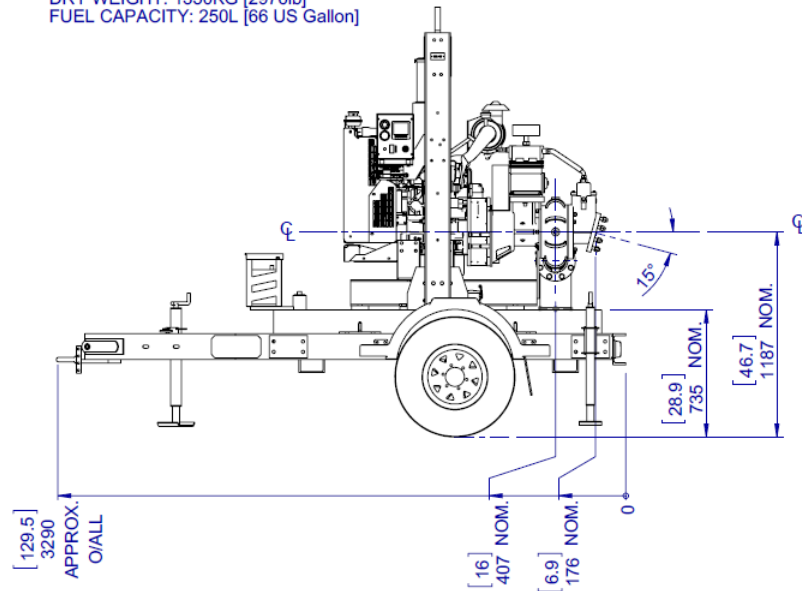
SYKES CP100i - Pumpend



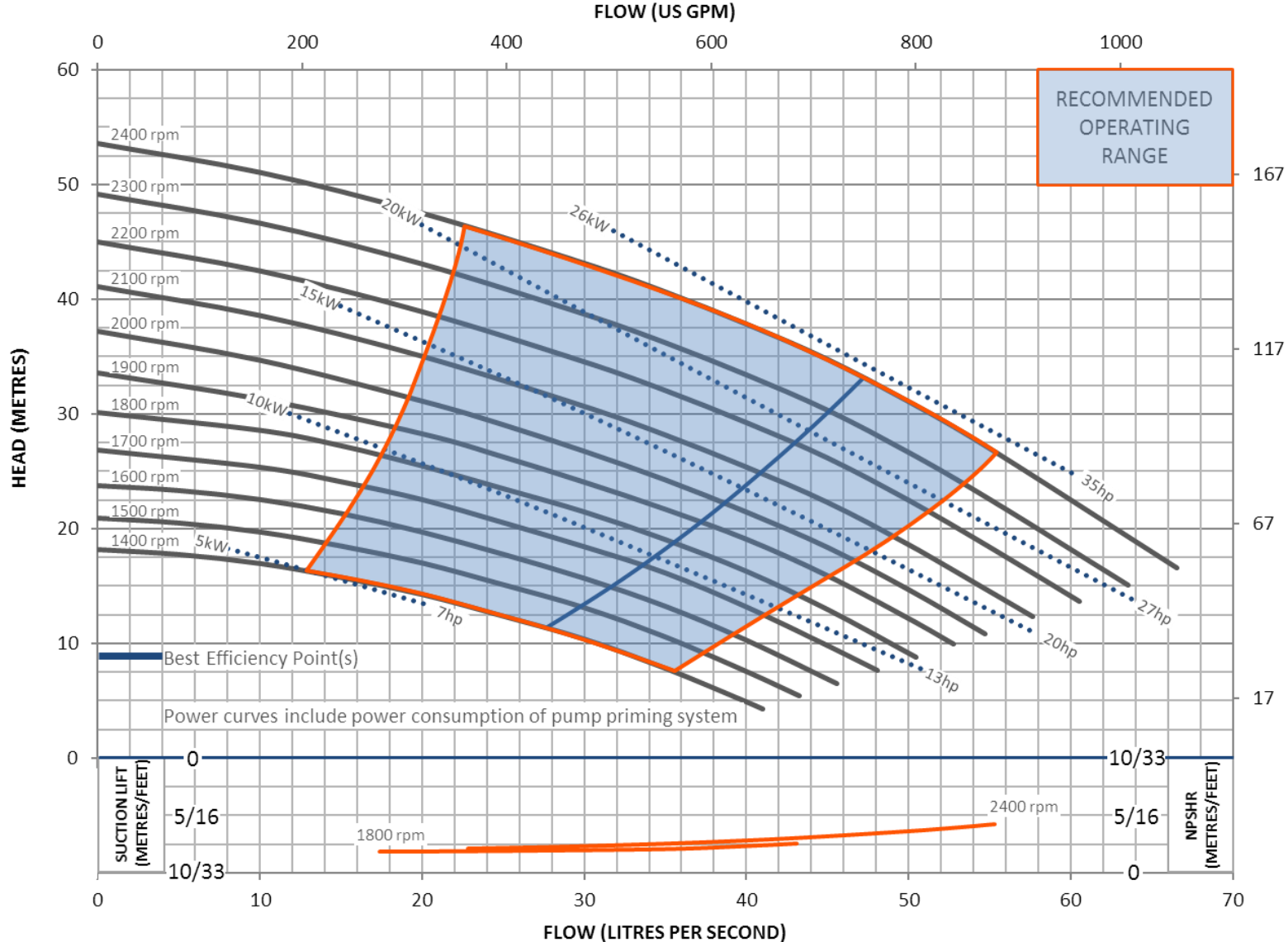
SYKES CP100i - Pumpset



DRY WEIGHT: 1350KG [2976lb]
FUEL CAPACITY: 250L [66 US Gallon]



CP100i Performance Curve



WATER

PUMPEND:

CP100i

IMPELLER DIA:

243mm / 9.57"

SOLID HANDLING SIZE:

45mm / 1.77"

SUCTION SIZE:

100mm / 4"

DISCHARGE SIZE:

100mm / 4"

Revision: 2 06-02-17

SYKES

¹Performance to AS2417/ISO9906 Grade 2 for clear, cold (15°C) water at sea level. Other liquids may require performance adjustments.

²Performance curves do not include discharge check or non return valve losses.

Design Details			Material Data								
Single Stage, End Suction type, 2 vane open impeller, single volute, centrifugal pump			Standards		AUSTRALIAN		AMERICAN				
			Materials of Construction		<i>Material</i>	<i>Grade</i>	<i>AS</i>	<i>Grade</i>	<i>ASTM</i>		
Suction Flange			100	mm	Tee Piece		SG IRON	400/12	1831	65-45-12	A536
			4	Inch	Front Adaptor Plate		N/A				
Delivery Flange			100	mm	Pump Casing (Volute)		SG IRON	400/12	1831	65-45-12	A536
			4	Inch	Front Wear Plate		Stainless	316/H6B	2074	CF8M	A351
Solids Handling Size			45	mm	Impeller		Stainless	316/H6B	2074	CF8M	A351
			1.8	Inch	Rear Wear Plate		Stainless	316/H6B	2074	CF8M	A351
Maximum Head			53	m	Rear Adaptor Plate		N/A				
			174	Ft	Pump Shaft		Stainless	431	2837	431	A276-98b
Maximum Capacity			67	L/sec	Bearing Bracket		SG IRON	400/12	1831	65-45-12	A536
			1,061	USPM	Bearing Covers		SG IRON	400/12	1831	65-45-12	A536
Engine Adaptor			SAE	#4	Mechanical Seal						
Shaft Diameter			40	mm	Multi spring balanced mechanical seal assembly with silicon carbide /silicon carbide mechanical seal faces, in self contained oil reservoir						
			1.58	Inch							
Fuel Rate @ BEP 2,000rpm Duty			3.46	L/hr							
			0.91	USGAL/hr							