

ALLIGHTSYKES

SYKES CP250i

Technical Pack

Rev1 Dec2017



JAMES RIVER
EQUIPMENT



LIGHT

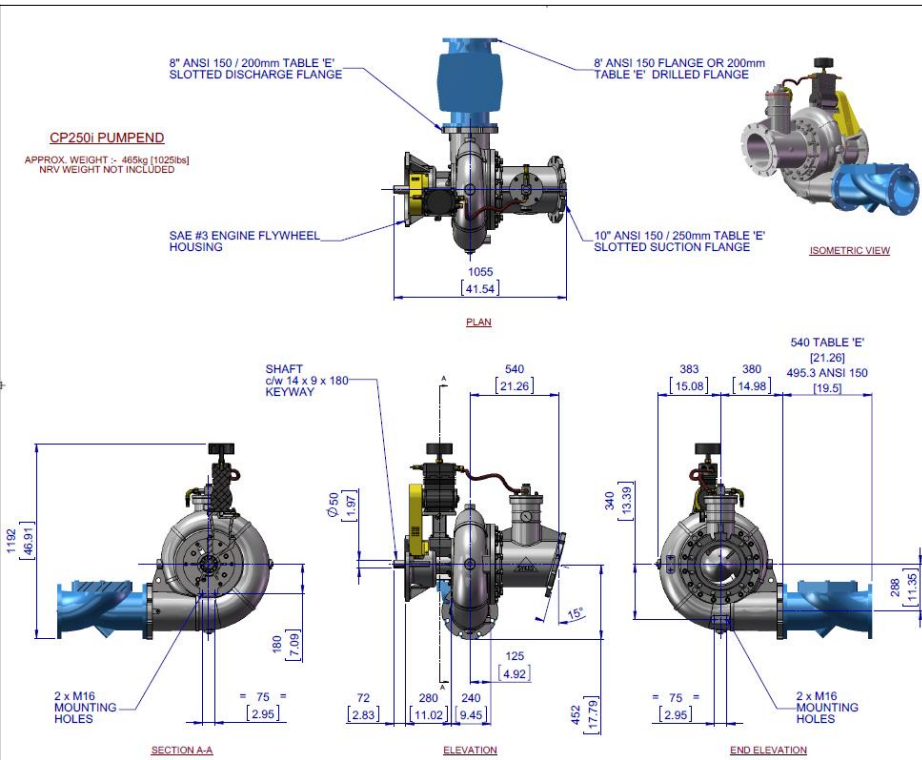
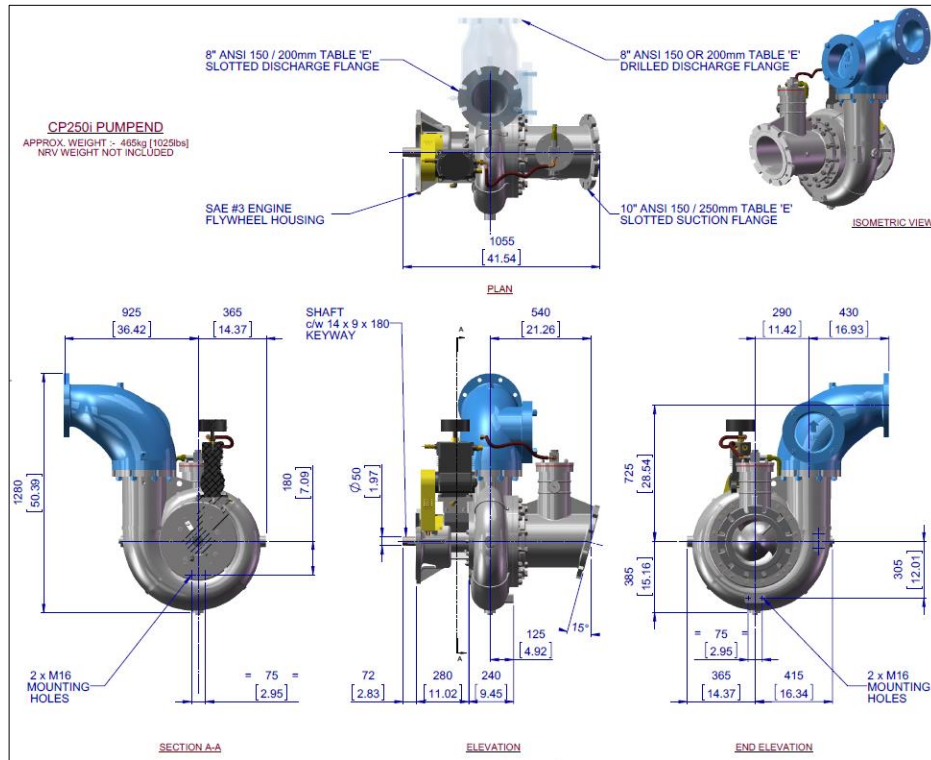


WATER



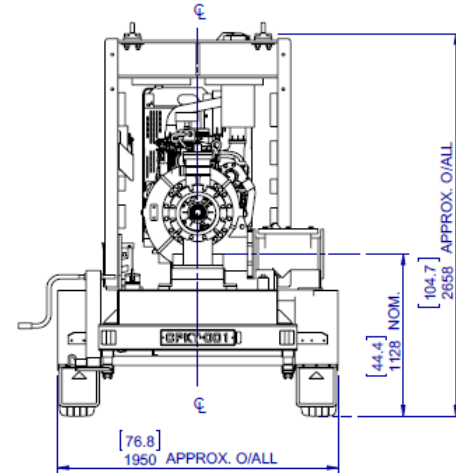
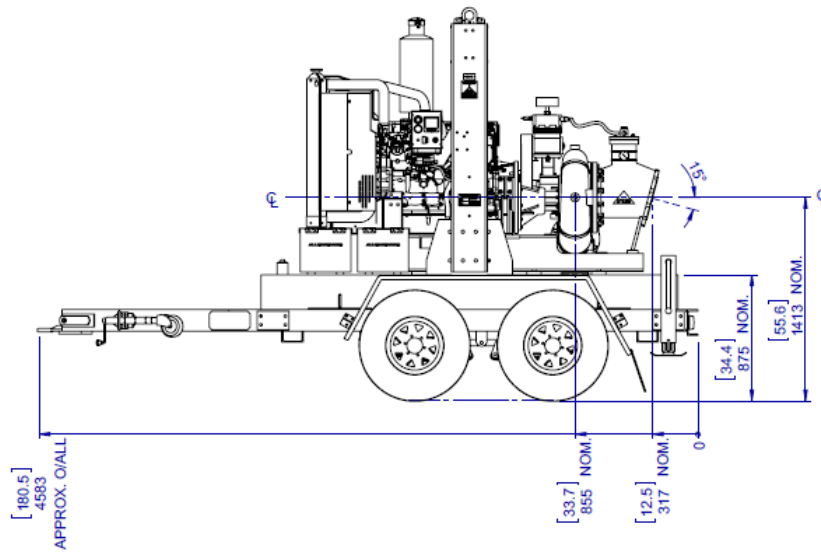
POWER

SYKES CP250i - Pumpend

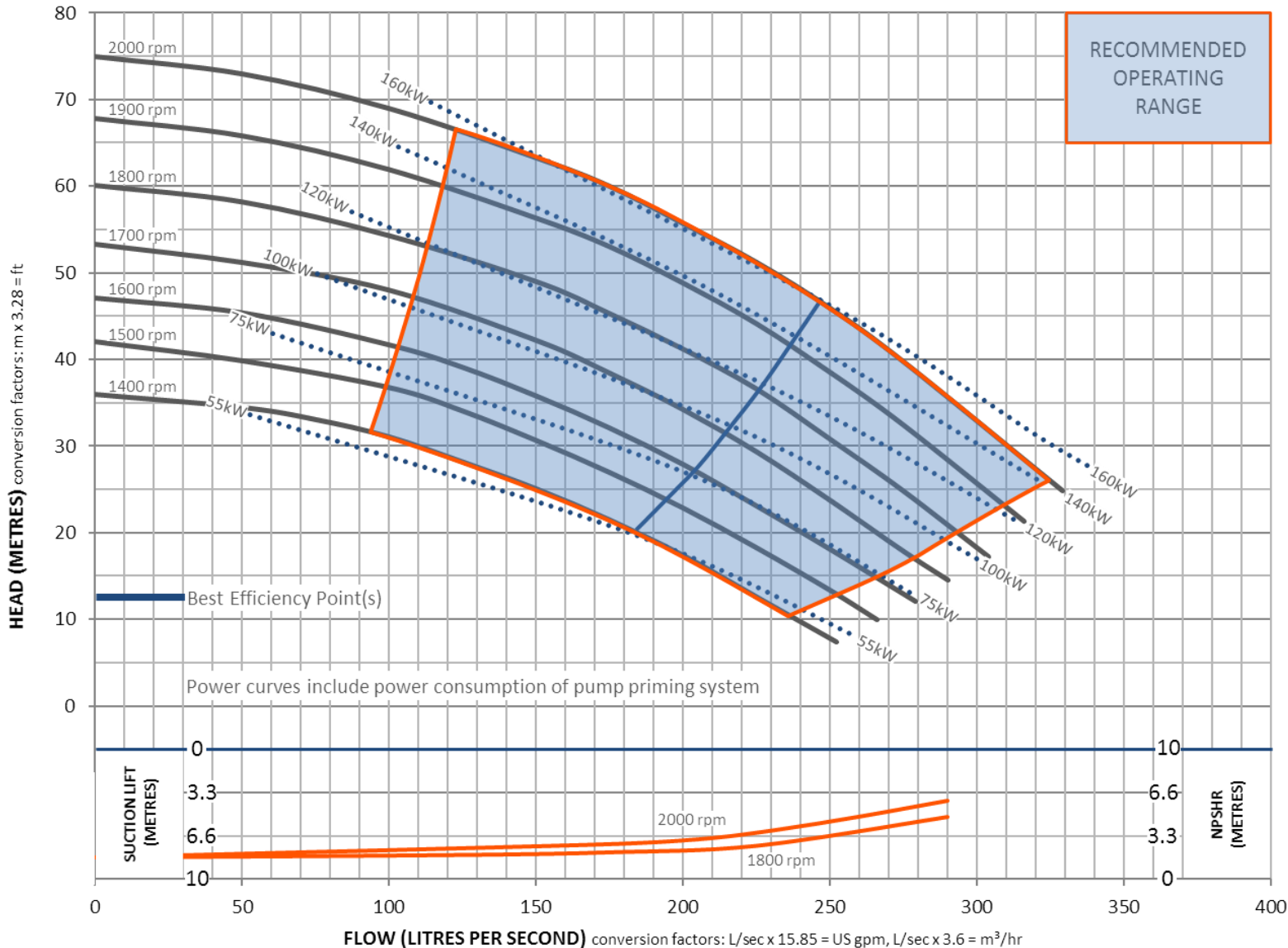


SYKES CP250i - Pumpset

DRY WEIGHT: 3250KG [7165lb]
FUEL CAPACITY: 900L [238 US Gallon]



CP250i Performance Curve



WATER

PUMPEND:

CP250i

IMPELLER DIA:

380mm

SOLID HANDLING SIZE:

60mm

SUCTION SIZE:

250mm

DISCHARGE SIZE:

200mm

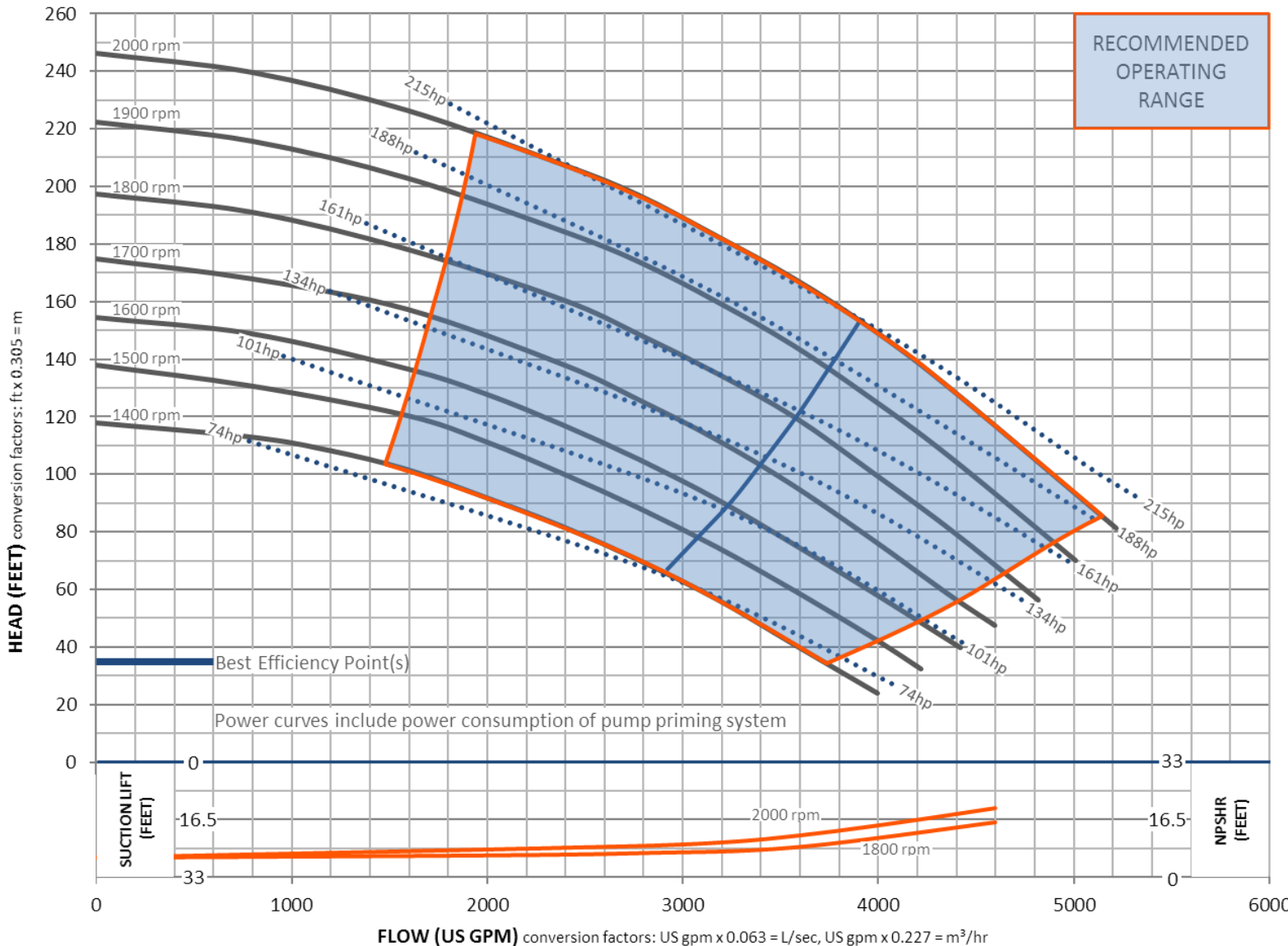
Revision: 1 02-05-14

SYKES

¹Performance to AS2417/ISO9906 Grade 2 for clear, cold (15°C) water at sea level. Other liquids may require performance adjustments.

²Performance curves do not include discharge check or non return valve losses.

CP250i Performance Curve



RECOMMENDED
OPERATING
RANGE



WATER

PUMPEND:

CP250i

IMPELLER DIA:

14.96"

SOLID HANDLING SIZE:

2.36"

SUCTION SIZE:

10"

DISCHARGE SIZE:

8"

Revision: 1 02-05-14

SYKES

¹Performance to AS2417/SO9906 Grade 2 for clear, cold (15°C) water at sea level. Other liquids may require performance adjustments.
²Performance curves do not include discharge check or non return valve losses.

Design Details			Material Data								
Single Stage, End Suction type, 2 vane open impeller, single volute, centrifugal pump			Standards		AUSTRALIAN		AMERICAN				
			Materials of Construction		<i>Material</i>	<i>Grade</i>	<i>AS</i>	<i>Grade</i>	<i>ASTM</i>		
Suction Flange			250	mm	Tee Piece		SG IRON	400/12	1831	65-45-12	A536
			10	Inch	Front Adaptor Plate		SG IRON	400/12	1831	65-45-12	A536
Delivery Flange			200	mm	Pump Casing (Volute)		SG IRON	400/12	1831	65-45-12	A536
			8	Inch	Front Wear Plate		Stainless	316/H6B	2074	CF8M	A351
Solids Handling Size			60	mm	Impeller		Stainless	316/H6B	2074	CF8M	A351
			2.4	Inch	Rear Wear Plate		Stainless	316/H6B	2074	CF8M	A351
Maximum Head			75	m	Rear Adaptor Plate		N/A				
			246	Ft	Pump Shaft		Stainless	431	2837	431	A276-98b
Maximum Capacity			330	L/sec	Bearing Bracket		SG IRON	400/12	1831	65-45-12	A536
			5,227	USPM	Bearing Covers		SG IRON	400/12	1831	65-45-12	A536
Engine Adaptor			SAE	#3	Mechanical Seal						
Shaft Diameter			50	mm	Multi spring balanced mechanical seal assembly with silicon carbide /silicon carbide mechanical seal faces, in self contained oil reservoir						
			1.97	Inch							
Fuel Rate @ BEP			28.66	L/hr							
1,800rpm Duty			7.57	USGAL/hr							